



# Primer

## PN-100/25 - PN-120/25 - PN-140/25 - PN-200/25 WALL IRONERS Ø 250 mm



### ELECTRONIC PROGRAMMER

Simple and user friendly : digital screen, precise control of temperature  
Preset ironing speeds, not adjustable



### EFFICIENCY

Acoustic comfort : <55 dB max  
Minimum space requirement: space saving, suitable for small spaces  
Ideal for processing small quantity of flat linen in facilities like restaurants, guest rooms, hostels...



### ROBUSTNESS

Nomex quality coating: resistant to high temperatures  
Panels in grey skinplate and stainless steel  
New kinematics, better reliability  
Industrial components, more durable



### FEATURES

Large roll contact area with the linen  
Automatic roll lifting control by foot cell detection  
Two available models:  
Standard: roll with cotton polyester coating  
Nomex: roll with Nomex coating



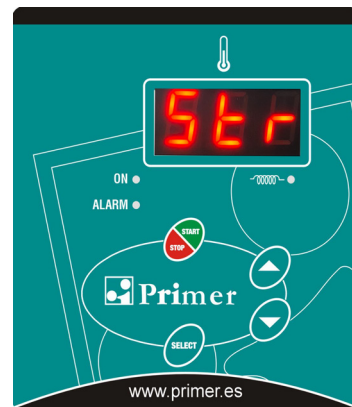
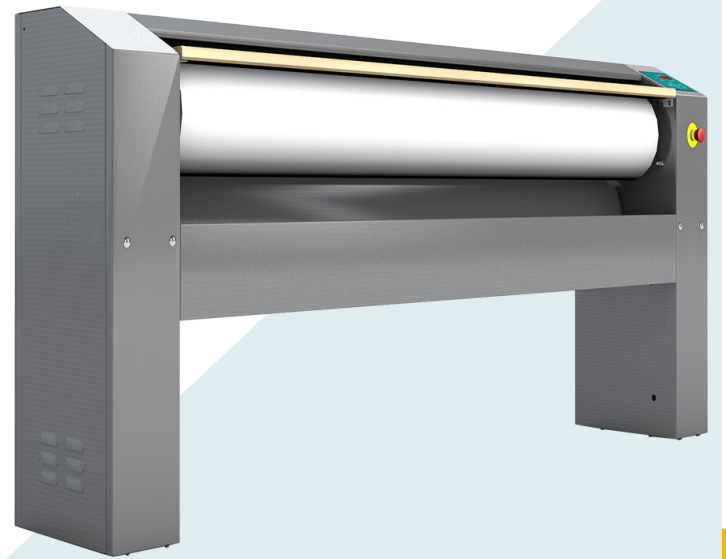
### MAINTENANCE

Easy installation : requires only an electrical connection  
Easy access on both sides for maintenance  
Quick and easy dismantling of bearings



### OTHERS

Front feeding and return  
Roll Ø 250 mm  
Working widths: 1.000, 1.200, 1.400 and 2.000 mm  
Electric heating  
CE certification

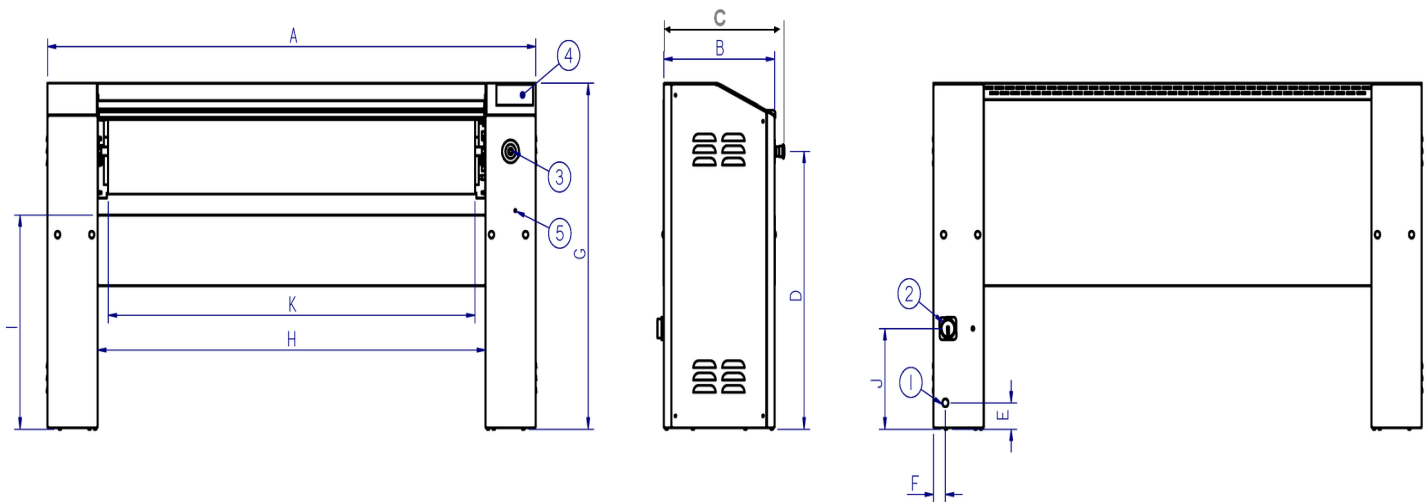


### OPTIONS

- Pedal control instead of photocell
- Tension 440V III 60 Hz without N (marine)
- 230V III+T 50-60 Hz
- 230V I+N+T 50 Hz (except model PN-200/25)

TECHNICAL DATA	UNIT.	PN-100/25	PN-120/25	PN-140/25	PN-200/25
<b>GENERAL DATA</b>					
Theoretical production*	Kg/h	25	27	30	35
Ø Roll	mm	250	250	250	250
Working width	mm	1.000	1.200	1.400	2.000
Ironing speed	m/min	4,2	4,2	4,2	4,2
Electronic programmer	-	Yes	Yes	Yes	Yes
Bed lifting	-	By photocell	By photocell	By photocell	By photocell
<b>POWER</b>					
Heating power	kW	4,95	6	7	12
Roll motor power	kW	0,18	0,18	0,18	0,18
Total electric power	kW	5,13	6,18	7,18	12,18
<b>CONNECTIONS</b>		<b>ELECTRIC</b>	<b>ELECTRIC</b>	<b>ELECTRIC</b>	<b>ELECTRIC</b>
Tension 230V - I + N + T	N°x mm²/A	3 x 6 / 25A	3 x 6 / 32A	3 x 10 / 40A	N/A
Tension 230V - III + T	N°x mm²/A	4 x 2,5 / 16A	4 x 4 / 20A	4 x 4 / 20A	4 x 6 / 32A
Tension 400V - III + N + T	N°x mm²/A	5 x 2,5 / 10A	5 x 2,5 / 10A	5 x 2,5 / 16A	5 x 4 / 20A
<b>OVERALL DIMENSIONS / PACKING DIMENSIONS</b>					
Net / gross width	mm	1.462 / 1.490	1.662 / 1.690	1.862 / 1.890	2.462 / 2.490
Net / gross depth	mm	484 / 540	484 / 540	484 / 540	484 / 540
Net / gross height	mm	985 / 1.130	985 / 1.130	985 / 1.130	985 / 1.130
Net / gross weight	kg	114 / 124	124 / 134	134 / 154	164 / 184
Volume	m3	0,69 / 0,91	0,79 / 1,03	0,89 / 1,15	1,17 / 1,51
<b>OTHERS</b>					
Noise level	dB	55	55	55	55

\*20-25% Theoretical production



- 01. Electrical connection
- 02. Main switch
- 03. Emergency stop
- 04. Control panel
- 05. access to inverter maintenance

	A	B	C	D	E	F	G	H	I	J	K
PN-100/25	1.462	423	484	791	75	45	985	1.079	610	287	998
PN-120/25	1.662	423	484	791	75	45	985	1.279	610	287	1.198
PN-140/25	1.862	423	484	791	75	45	985	1.479	610	287	1.398
PN-200/25	2.462	423	484	791	75	45	985	2.079	610	287	1.998

