



Primer

PN-140/25 - PN-200/25 EXCELLENCE WALL IRONERS Ø 250 mm



ELECTRONIC PROGRAMMER

Simple and user friendly with an automatic mode:
automatic management of ironing speed according to
the selected temperature
Digital speed and temperature display



EFFICIENCY

Acoustic comfort : <55 dB max
Minimum space requirement: space saving, suitable for
small spaces
Ideal for processing small quantity of flat linen in facilities
like restaurants, guest rooms, hostels...



ROBUSTNESS

Nomex quality coating: resistant to high temperatures
Panels in grey skinplate and stainless steel
Wooden feeding board
New kinematics, better reliability
Industrial components, more durable



FEATURES

Large roll contact area with the linen
Mode of operation identical to a flatwork ironer: no roll
lifting, more ergonomic
Models equipped with Nomex belts, suction and
variable speed inverter, more productivity
Adjustable speed and temperature



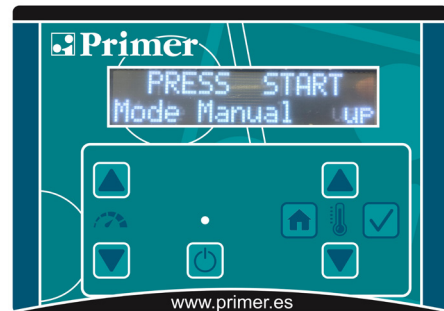
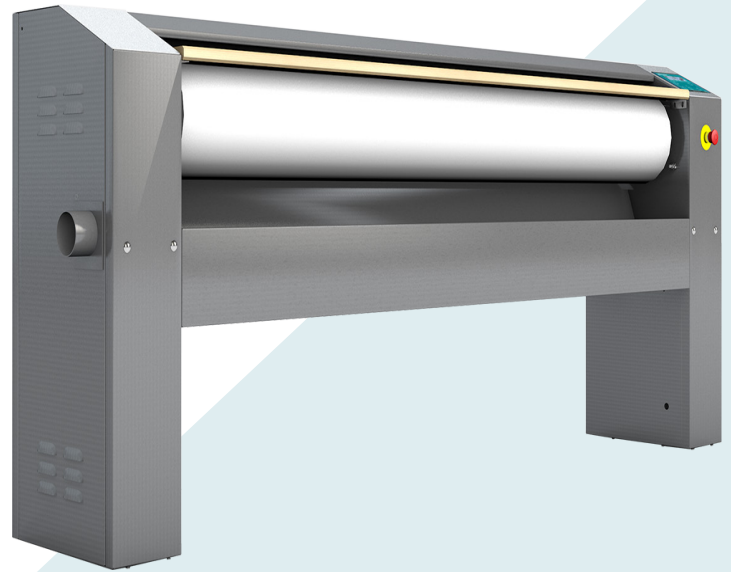
MAINTENANCE

Easy installation : requires only an electrical
connection
Easy access on both sides for maintenance
Quick and easy dismantling of bearings



OTHERS

Front feeding and return
Roll ø 250 mm
Working widths: 1.400 and 2.000 mm
Electric heating
CE certification

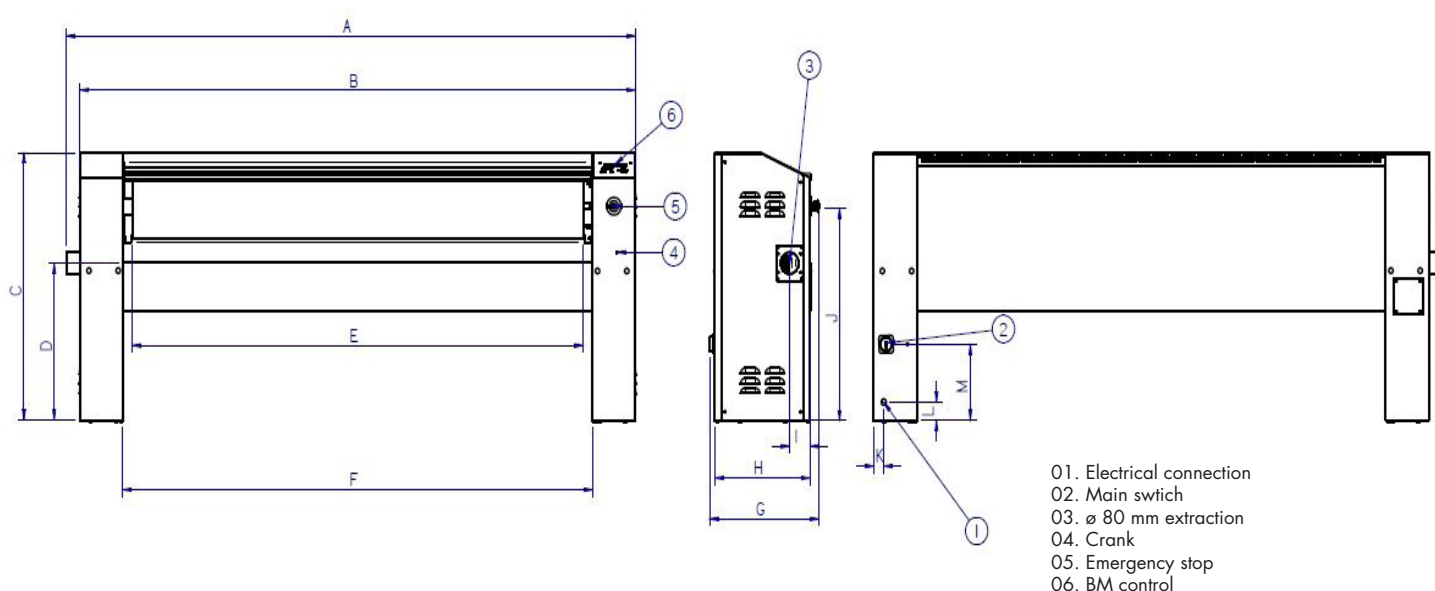


OPTIONS

- Tension 440V III 60 Hz without N (marine)
- 230V III+T 50-60 Hz

TECHNICAL DATA	UNIT.	PN-140/25 EXCELLENCE	PN-200/25 EXCELLENCE
GENERAL DATA			
Theoretical production*	Kg/h	40	50
Ø Roll	mm	250	250
Working width	mm	1.400	2.000
Ironing speed	mt/min	1,5 - 6	1,5 - 6
Electronic programmer	-	Yes	Yes
Bed lifting (manual by pedal)	-	None	None
POWER			
Heating power	Kw	7	12
Roll motor power	Kw	0,18	0,18
Fan motor power	Kw	0,12	0,12
Total electric power	Kw	7,3	12,3
CONNECTIONS		ELECTRIC	ELECTRIC
Tension 230V - I + N + T	N° x mm ² /A	4 x 6 / 20A	4 x 10 / 40A
Tension 400V - III + N + T	N° x mm ² /A	5 x 4 / 16A	5 x 4 / 20A
OVERALL DIMENSIONS/ PACKING DIMENSIONS			
Net width / Gross width	mm	1.923 / 1.890	2.523 / 2.490
Net depth / Gross depth	mm	484 / 540	484 / 540
Net height / Gross height	mm	985 / 1.130	985 / 1.130
Net weight / Gross weight	Kg	154 / 174	184 / 204
Net volume / Gross volume	m ³	0,92 / 1,15	1,20 / 1,52
OTHERS			
Noise Level	dB	60	60

*20-25% Theoretical production



	A	B	C	D	E	F	G	H	I	J	K	L	M
PN-140/25 EXCELLENCE	1.922	1.862	985	610	1.400	1.480	484	423	91	791	45	75	287
PN-200/25 EXCELLENCE	2.522	2.462	985	610	2.000	2.080	484	423	91	791	45	75	287

