



# Primer

## DDO-22 OPTIMA TUMBLE DRYERS



### T2 CONTROL

User friendly and totally programmable 7" T2 USB Connection. Online platform free of charge for programming, telemetry, data analysis...thanks to the IoT Videos on display (ads, instructions, etc.) 37 languages



### OUTSTANDING FEATURES

Reversing drum action as standard  
Stainless steel drum as standard  
Frequency inverter as standard



### EFFICIENCY

DUAL AIRFLOW- mixed axial-radial airflow.  
Big fluff filter



### CONNECTIVITY

IoT - Primerlink  
Management of laundries: OPL and COIN  
Remote payment



### VERSATILITY

Make to order - customisation  
WET CLEANING  
OPL > Multivending - Standard OPL model easily transformable to coin laundry uses



### ERGONOMICS

Drawer as fluff filter, stainless steel mesh  
Biggest door diameters



### MAINTENANCE

Hinged control panel: easy and ergonomic access  
Technical menu: statistics for technicians and maintenance with external console (with console option)



### OTHERS

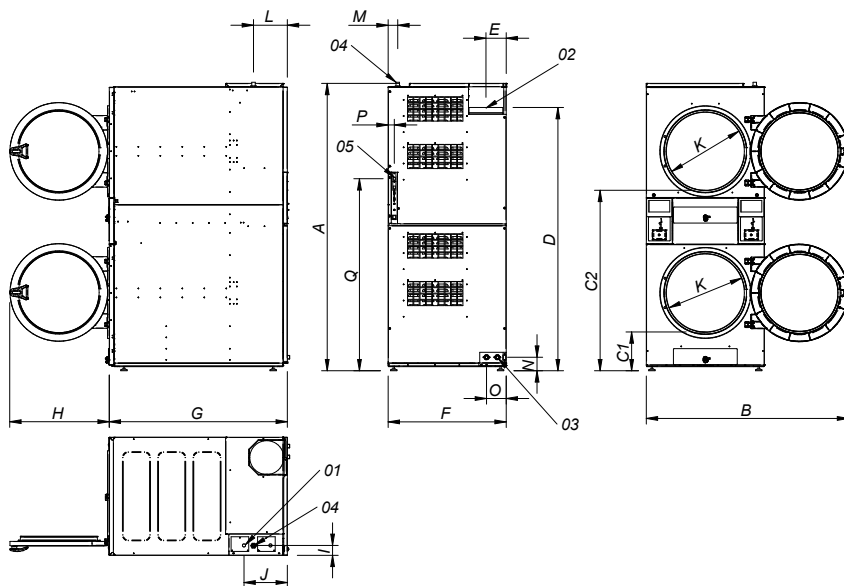
Grey skinplate outer casing, stainless steel look  
EFFICIENT DRUM - new drum with stamped holes  
COOL DOWN - anti-wrinkle at the end of the cycle  
Heating options: electric and gas  
CE approved



### OPTIONS

- SMART DRY - Intelligent humidity control. Temperature probe at drum inlet.
- Double door glass
- Integrated Fire Extinguishing System
- Tropicalized model
- Opposite door opening
- Dosing-spraying
- Back panel external air + filter
- Fluff filter with grid 0,3 mm (standard is 0,6mm)
- Stainless steel front and side panels
- Frontal panel in stainless steel
- Maritime wooden packing
- Ship voltage for electric models: 440V III 50/60 Hz No neutral
- Other voltages available

TECHNICAL DATA	UNIT.	DDO -22 P
<b>CAPACITY</b>		
Capacity 1/18	Kg	48
Capacity 1/20	Kg	44
Hourly Output (gas)	Kg/h	88
Evaporation capacity (gas)	l/h	44
<b>DRUM</b>		
Ø Drum	mm	835
Ø Door	mm	574
Door center height	mm	547 / 1.618
Load hole bottom height	mm	272 / 1.322
Drum length	mm	800
Drum volume	l	438
<b>POWER</b>		
Drum motor power	kW	0,37 x 2
Fan motor power	kW	0,55 x 2
Electric heating power	kW	-
Total electric power (elec.model)	kW	-
Gas heating power	kW	30,4 x 2
Instant propane gas consumption (G31)	kg/h	1,03 x 2
Instant natural gas consumption (G20)	m3/h	1,27 x 2
Total electric power (gas model)	kW	1,94
<b>CONNECTIONS</b>		
		<b>GAS</b>
Tension 230V - I + N + T	Nº x mm2 / A	3 x 1,5 / 20A
Tension 230V - III + T	Nº x mm2 / A	-
Tension 400V - III + N + T	Nº x mm2 / A	-
Ø Gas inlet	BSP	3/4"
<b>DIMENSIONS / PACKING DIMENSIONS</b>		
Net width / Gross width	mm	870 / 950
Net Depth / Gross Depth	mm	1.328 / 1.411
Net Height / Gross Height	mm	2.117 / 2.250
Net weight / Gross weight	Kg	374 / 394
<b>OTHERS</b>		
Max airflow	m3/h	900 x 2
Ø Fume exhaust	mm	250
Sound level	dB	69



- 01 ELECTRIC CONNECTION
- 02 FUMES OUTLET Ø250
- 03 2 SPRINKLER VALVES 3/4"
- 04 GAS INLET 3/4
- 05 ETHERNET CONNECTION (only available CONTROL T2 models)

	A	B	C1	C2	D	E	F	G	H	I	J	K	L	M	N	O	P	Q
DDO-22	2118*	1490	286	1330	1940	149	870	1312	735	73	320	575	250	70	100	145	45	1416

\* Measurement with legs mounted (30mm)

